



JEB
Acoustic Partitions

INTEGRA

Project Reference Presentation

2020



JEB

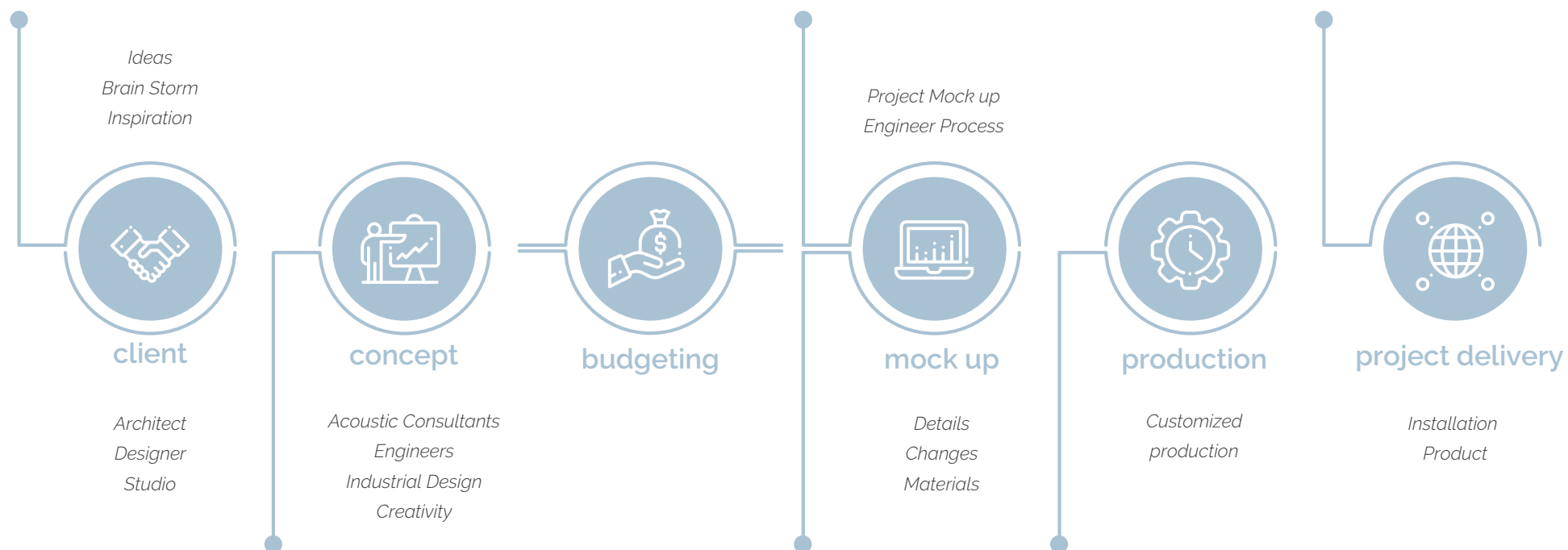
Acoustic Partitions

Establish a positive workplace **CULTURE**,
a strong **IDENTITY** and a captivating
ATMOSPHERE with premier office products.

WHERE WE ARE



OUR SERVICES



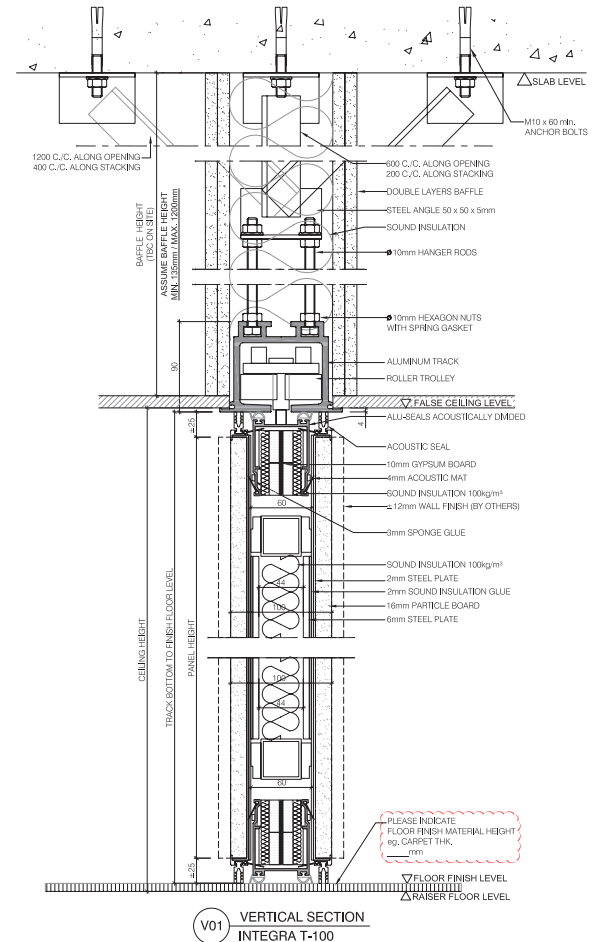
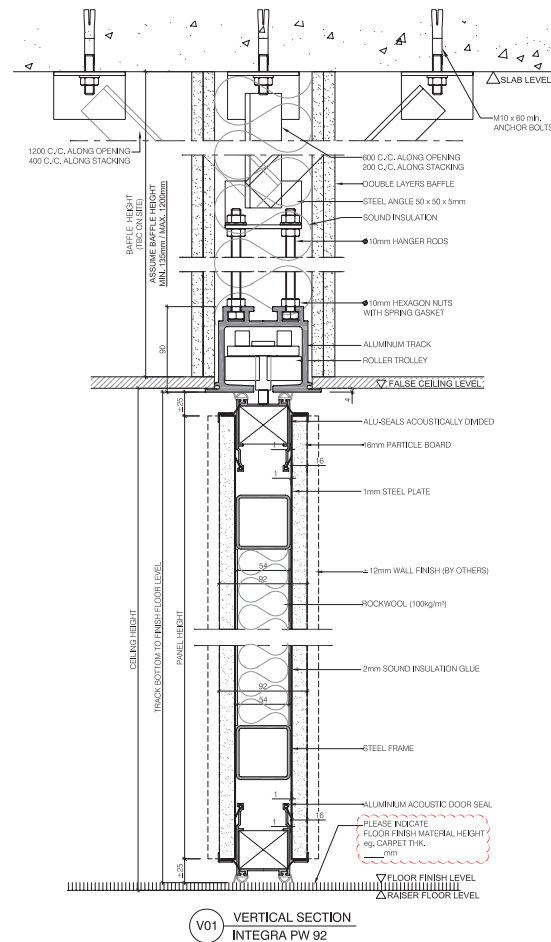
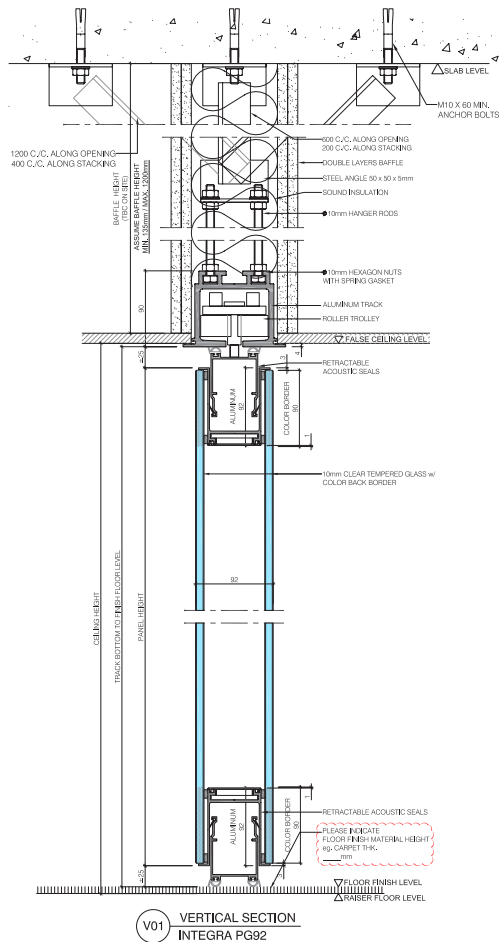


 **JEB** Acoustic Partitions

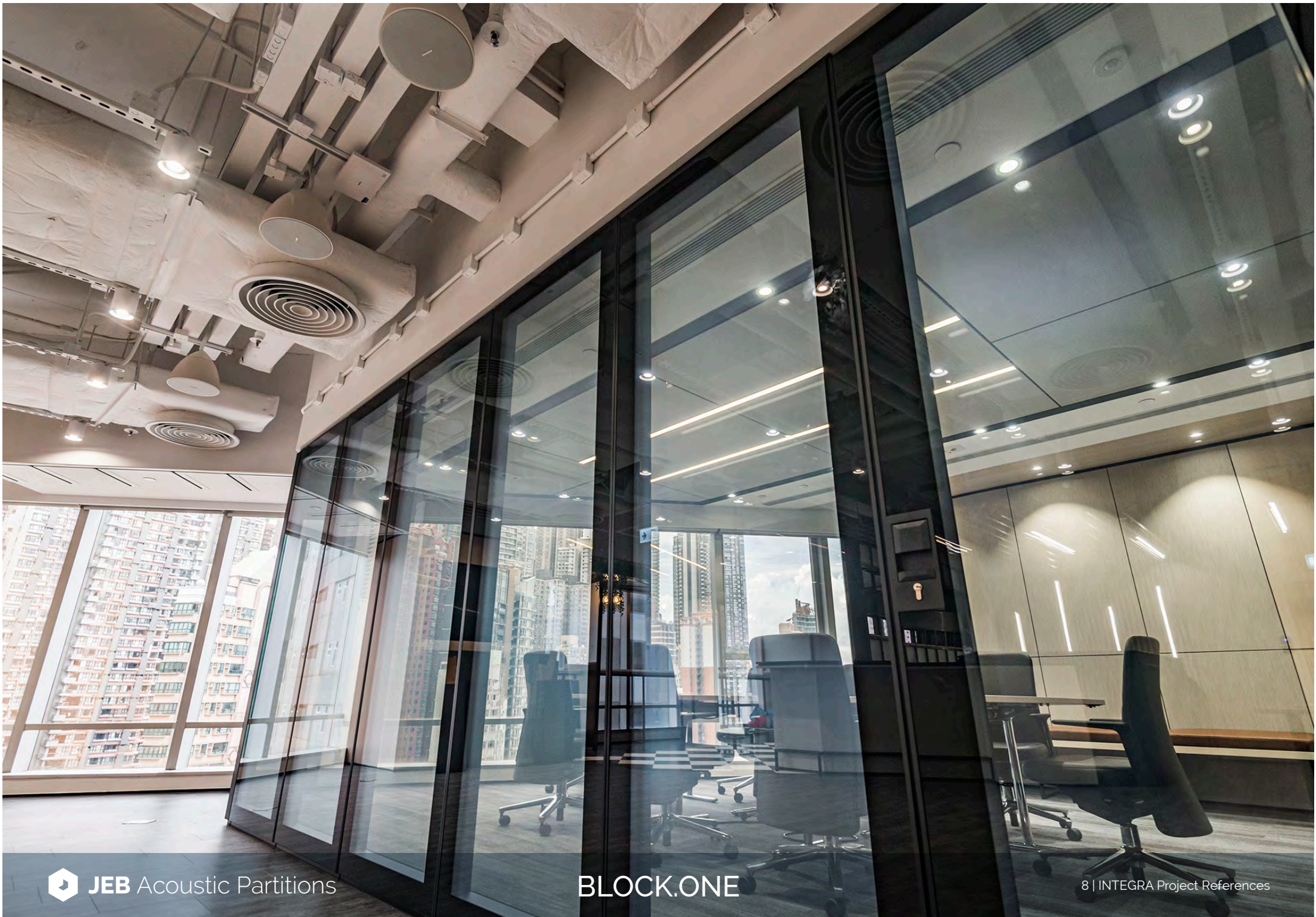
INTEGRA

INTEGRA operable walls, both glass and solid, are constructed with vertical stiles and 2-way or 3-way junctions. Its range of thickness provides various acoustic levels for different requirements and budgets.

With our signature switchable glass panels, users can choose between light transmission and instant visual privacy with one click.

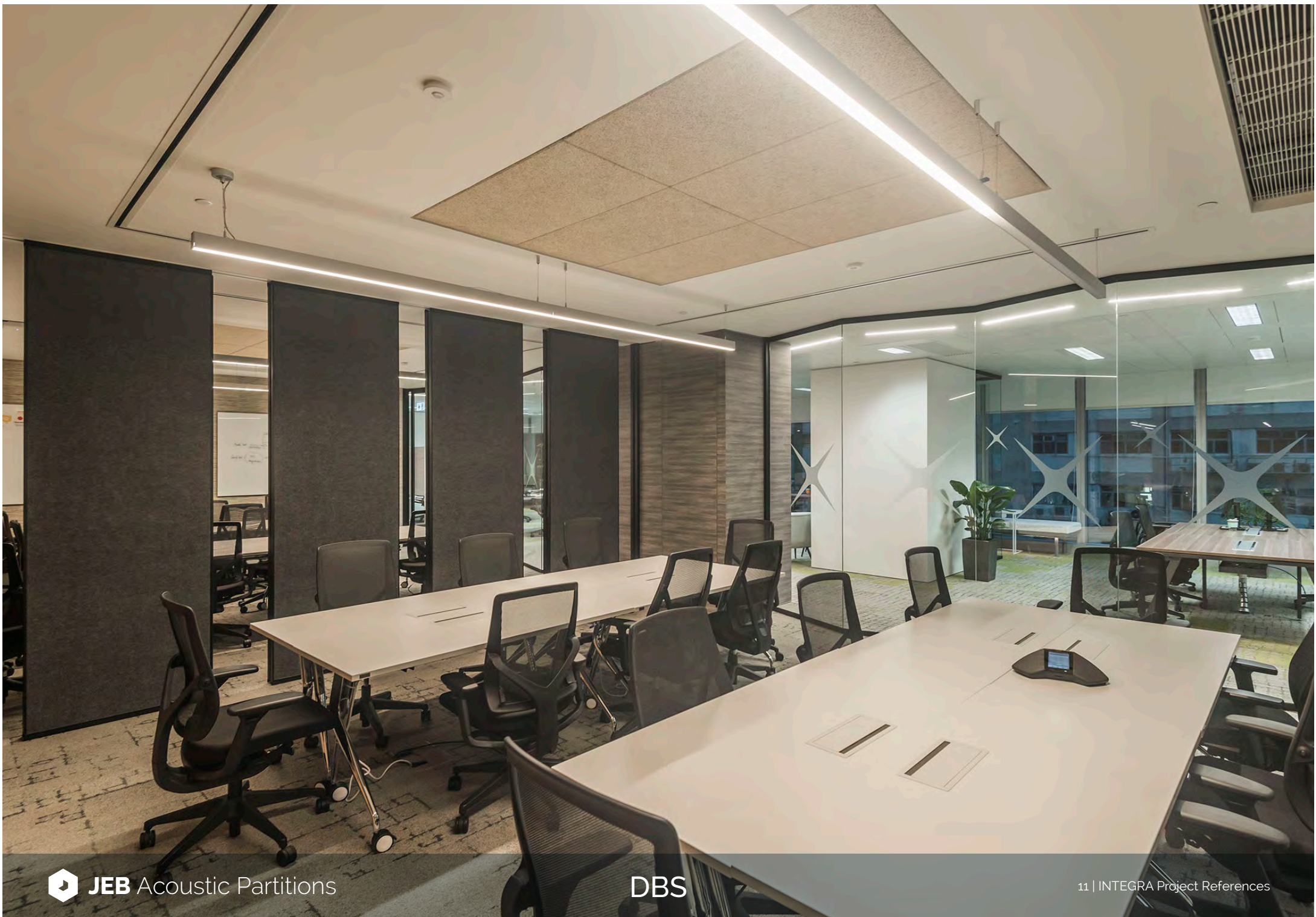


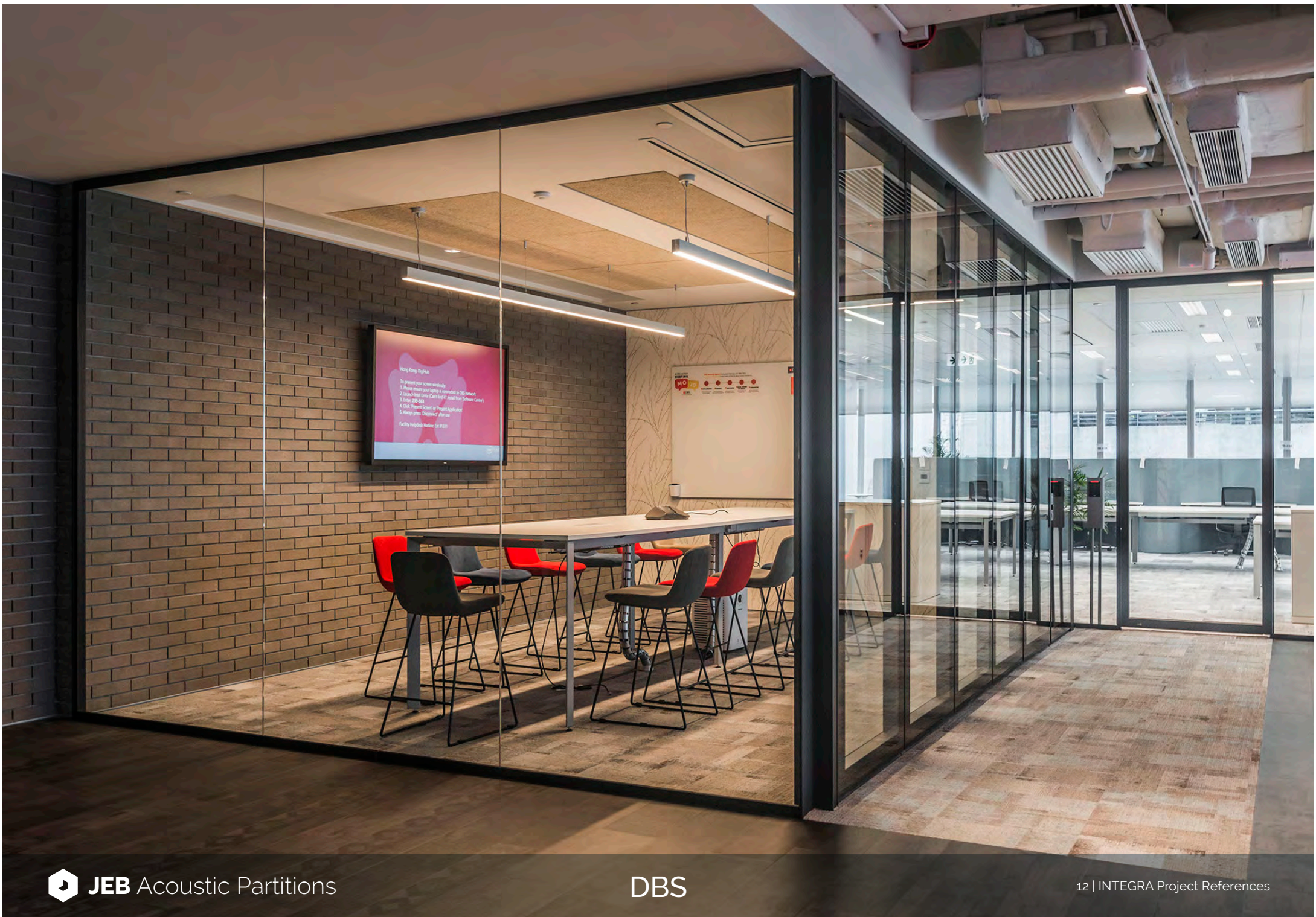
TYPE		INTEGRA 8 Smart Glass/Clear Glass		INTEGRA T Bare Finish	
Dimensions	Panel thickness	90 mm		100 mm	90 mm
	Panel width	700 mm - 1200 mm			
Construction	Frame material	Aluminum & Steel			
	Panel connection (vertical joints)	Aluminum tongue and groove profile incorporating with dual vinyl acoustical seals.			
	Vertical sound seals	Deep interlock but easy detach, incorporating with dual vinyl acoustical seals.			
	Horizontal sound seals	Both top & bottom retractable seals are easily simultaneously activated by handle using a bit of strength. Seals do not contact floor or track during movements of the panels.			
	Panel face/Finish	5 + 1.52 PVB + 5 mm Laminated Glass & 6 + 1.52 PVB+ 4 mm Laminated Glass - 47 dB	10 mm thick Tempered Glass on both sides - 44 dB	12 mm thick chipboard on both sides	
	Sound insulation in STC (dB)	5 + 1.52 PVB + 5 mm Laminated Glass & 10 mm thick Laminated Glass - 46 dB	6 + 1.52 PVB + 6 mm Laminated Glass on both sides - 48 dB	56 dB	53 dB
Technical information	Top clearance	25 - 40 mm			
	Bottom clearance	25 - 40 mm			
	Telescopic panel	Wall pressure bar with extended telescope element			

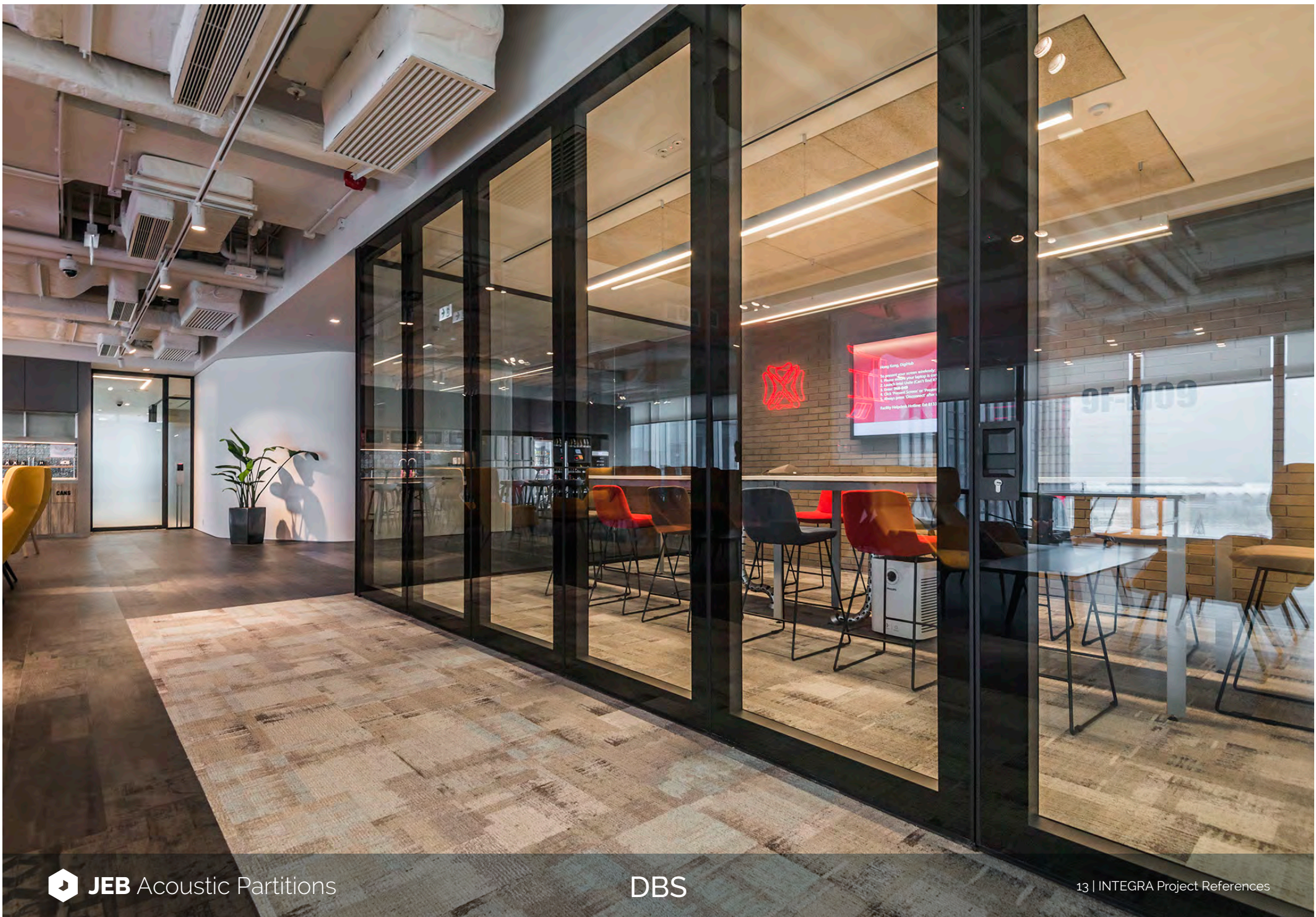








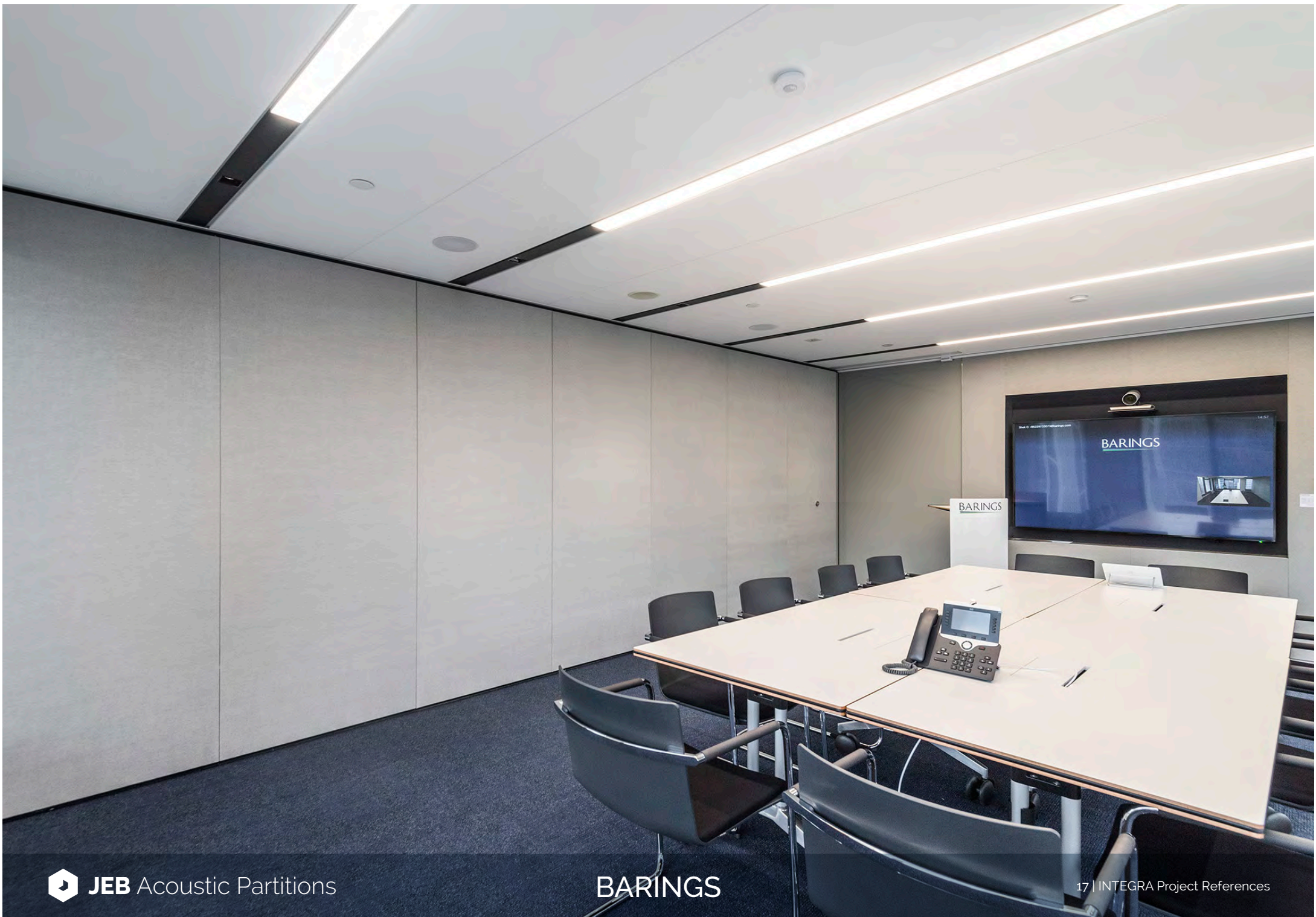


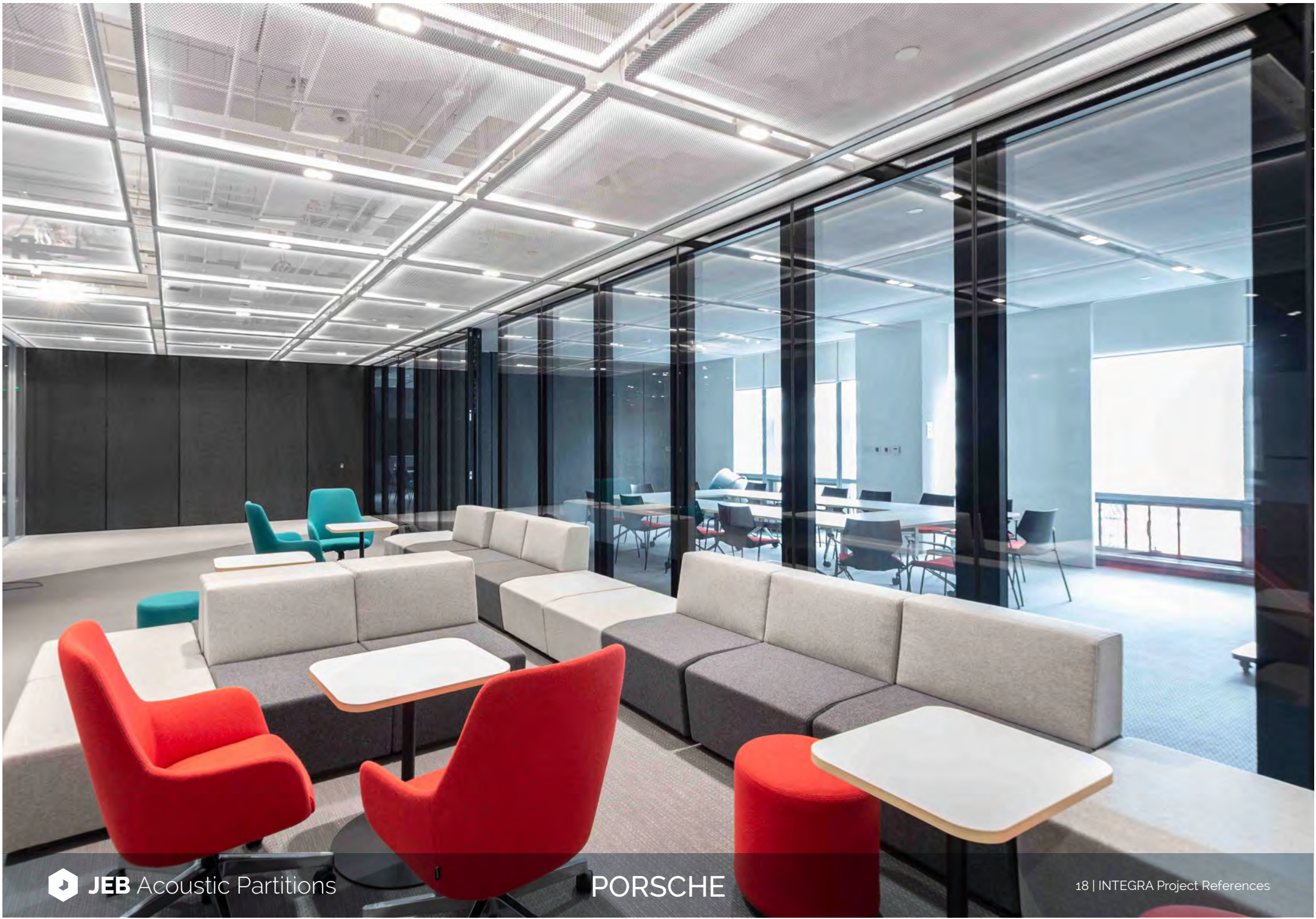






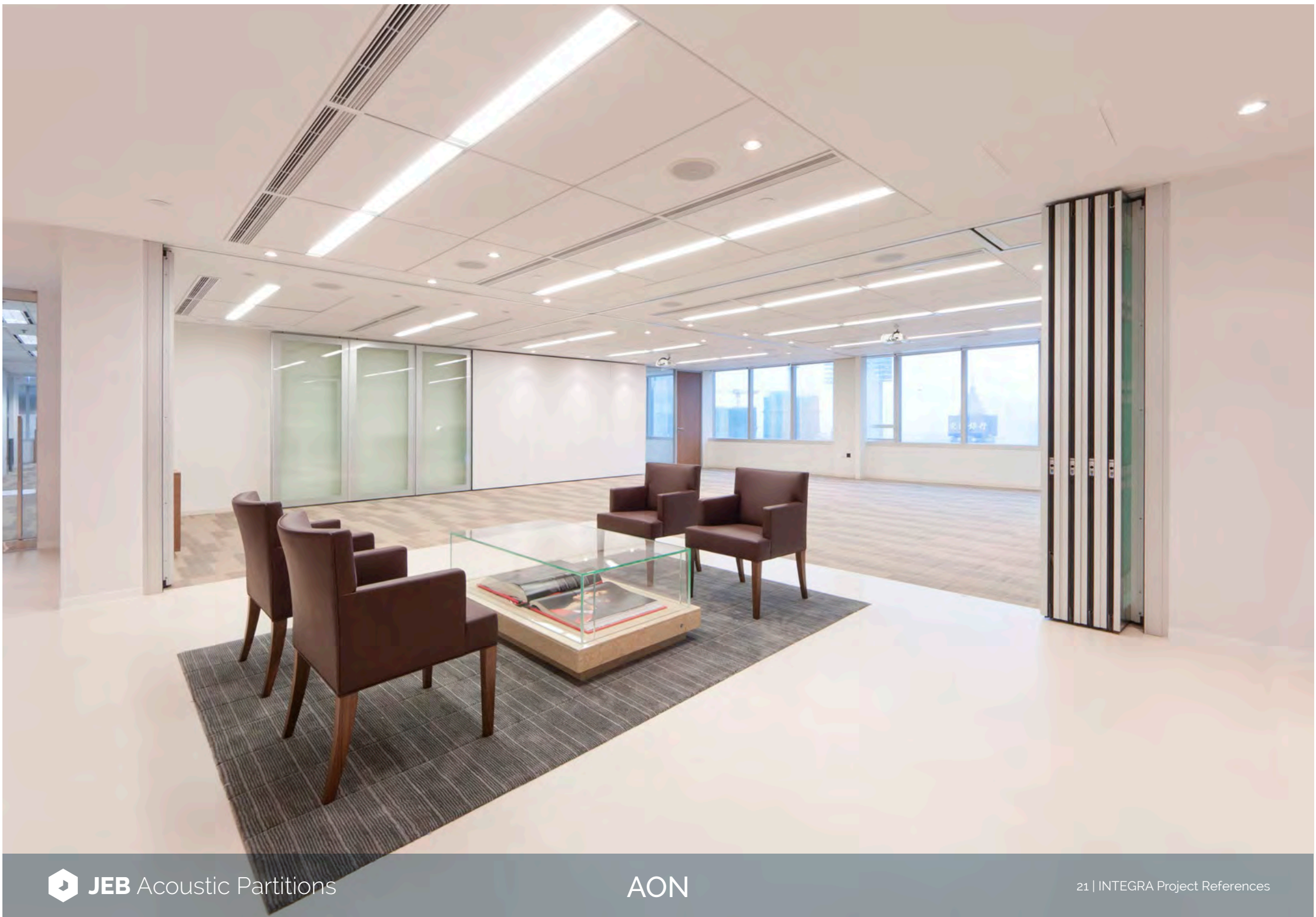




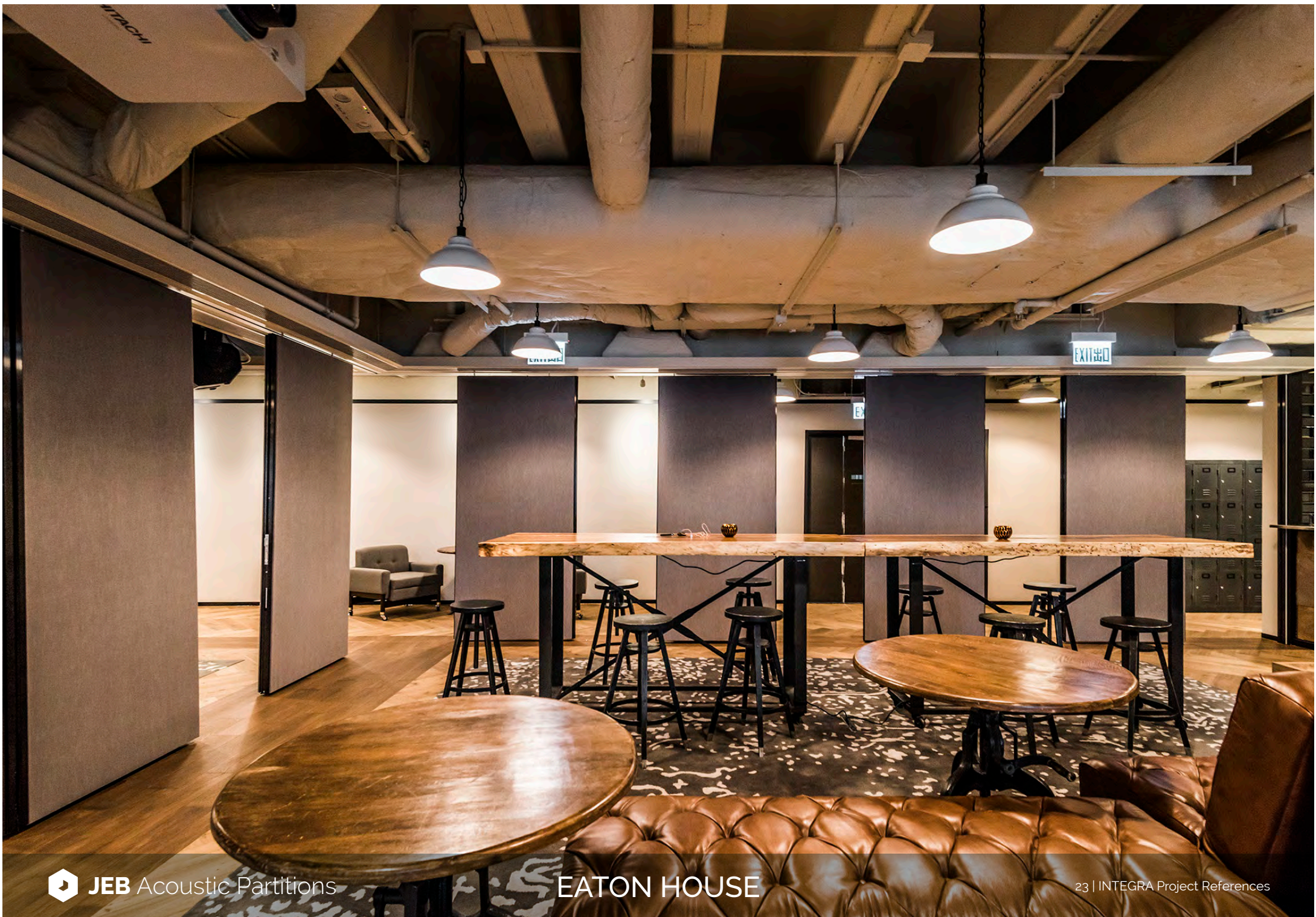


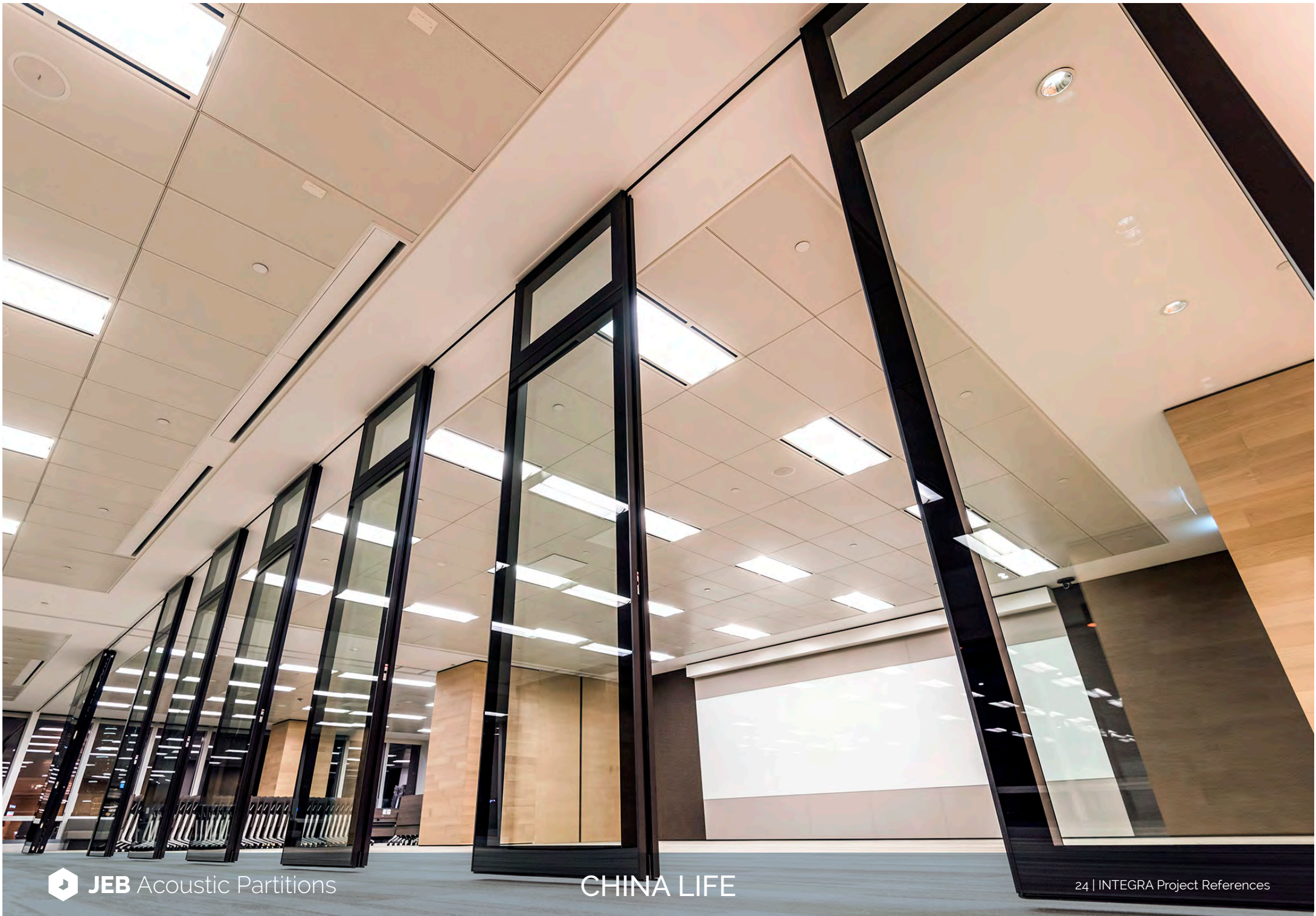




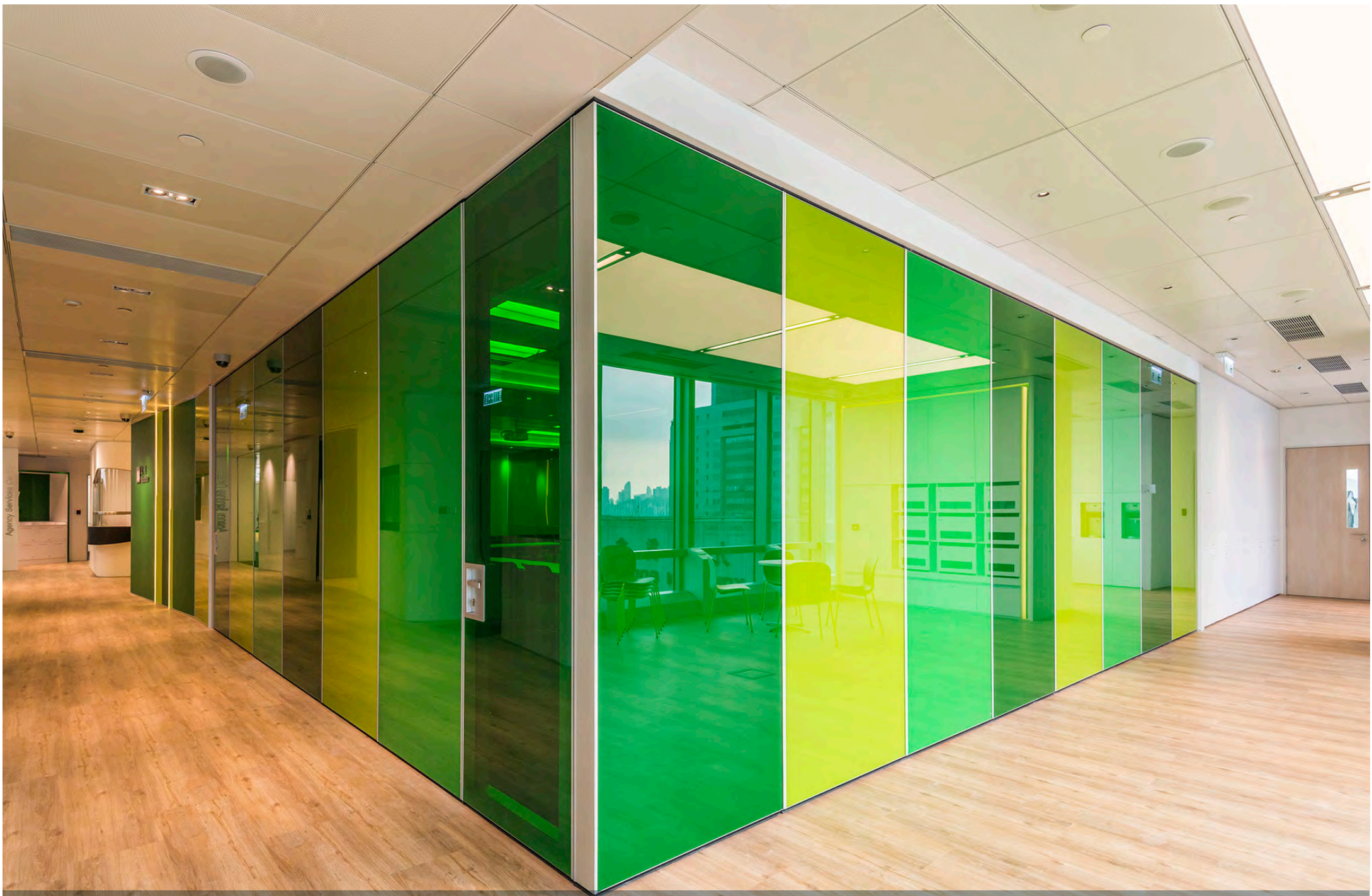
















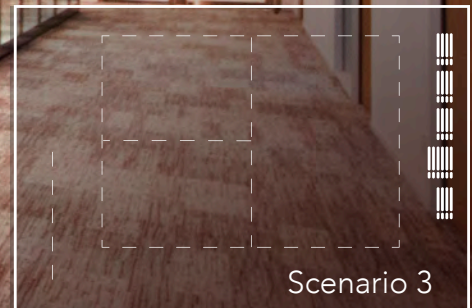




Scenario 1



Scenario 2

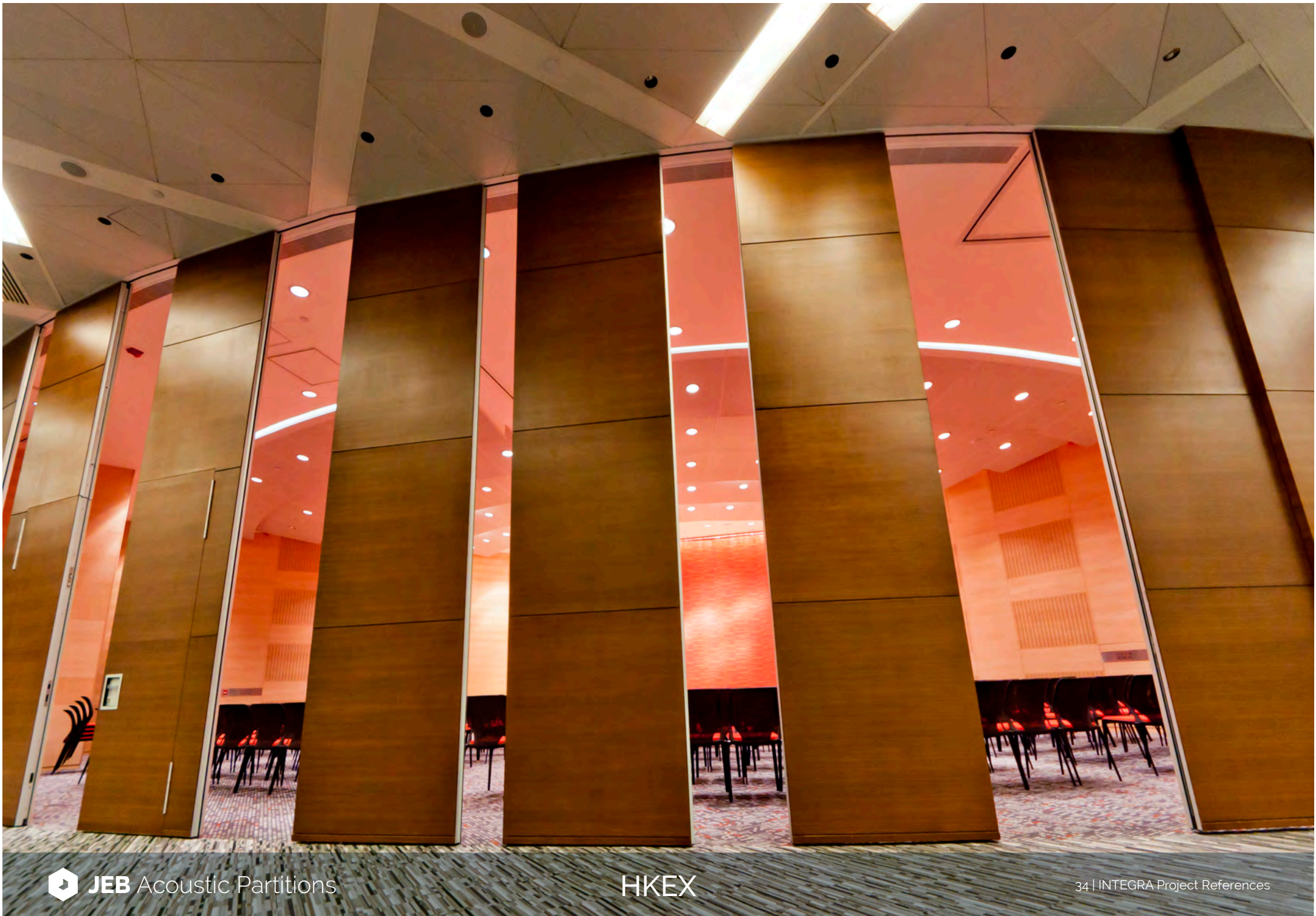


Scenario 3









Handle /
Standard Level Handle



Handle /
Boxed Recess Lever handle



Handle /
Lift-up Handle



Handle /
Squash Court Ring Handle





5A Cheung Wah Industrial Building,
10-12 Shipyard Lane,
Quarry Bay, Hong Kong
Jebpartitions.com

Date Updated : 13 JULY 2020