

**JEB**  
Partitions



# REDEFINE THE WAY YOU WORK

**MYS** | Michael Young

Copyright © Michael Young Limited 2020

# CABIN



" The Cabin offers an independent  
space for private meetings,  
casual conversations and relaxation. "



A man with glasses and a dark shirt is sitting at a white desk inside a soundproof cabin. He is writing on a piece of paper. The cabin has a blue cushioned bench and a white desk. The background shows a modern office environment with a staircase.

# CABIN

The Cabin is a conference room system that offers flexibility for all offices and workspaces in open office environments.

## Comfort

It creates a soundproof environment that helps to reduce noise pollution and offers greater comfort for everyone. The Cabin can accommodate up to six people.

## Wellness

The Cabin is a space where individuals can have a moment of solitude for relaxation and a space for casual meetings.

## Concentration

The Cabin is a multifunctional space that is ideal for meetings, interviews, brainstorming or other situations that require particular privacy and focus.









Decorative flaring

Central sprinkler outlet

Laminated glass panel

Outer structure color matched to panel pattern

WI custom Michael Young patterned EchoPanel

WI grooved EchoPanel

100% recyclable tabletop

Electrical sockets

Upholstered sofa

Single central table post

Eco-friendly and durable Sisal carpet











## Mystic Black

### Interior



Metal Parts  
Powdercoat Matt Champagne



Wall Panels  
EchoPanel Latitude 468



Ceiling  
EchoPanel 908



Upholstery  
Focus 384

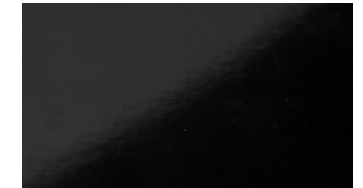


Floor  
Sisal R-8158



Table  
White Ecoboard

### Exterior



Metal Parts  
Black Powdercoat



Wall Panels  
Muse Mineral 545

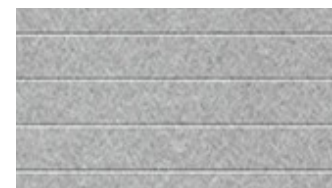


## Whisper White

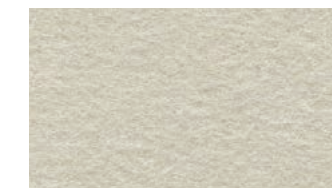
### Interior



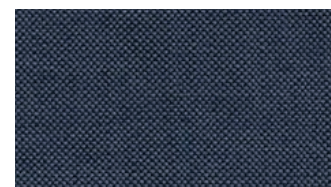
Metal Parts  
Powdercoat Matt Champagne



Wall Panels  
EchoPanel Latitude 402



Ceiling  
EchoPanel 908



Upholstery  
Focus 300



Floor  
Sisal R-8158



Table  
White Ecoboard

### Exterior



Metal Parts  
White Powdercoat



Wall Panels  
Muse Mineral 503





# EXTERIOR

The Cabin is the solution for the need of both socialization and privacy.

**Measurements :** 2150mm x 1800mm x 2300mm

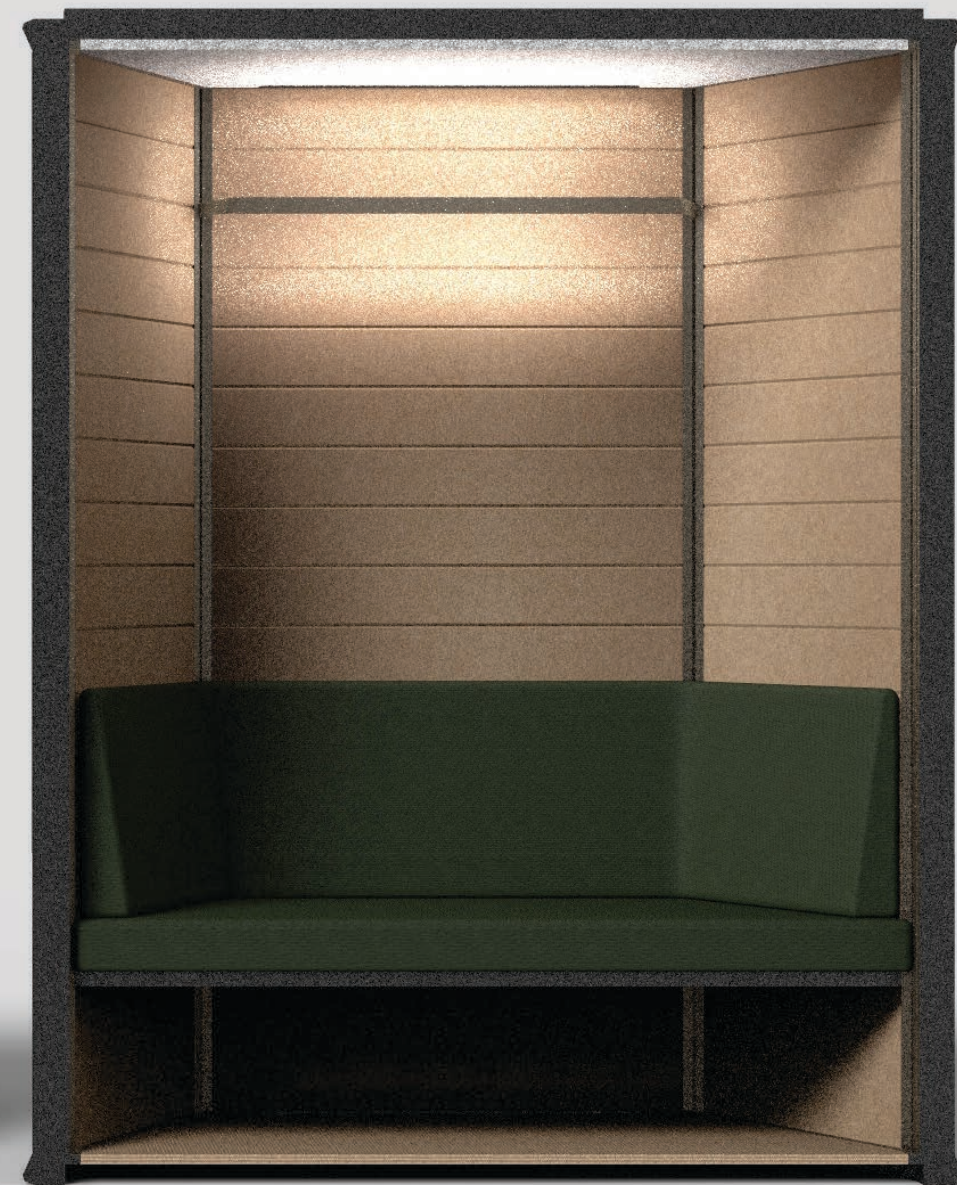
**Material :** Single glazed laminated glass 2135mm x 896mm x 13.5mm

**Colour Options :** Mystic Black or Whisper White

## Wall Panels

The exterior comprises of a custom-designed Michael Young patterned EchoPanel, manufactured in Australia using recycled PET bottles.





# INTERIOR

The Cabin provides a comfortable environment for meetings or individual work to take place without disturbances.

**Overall Dimensions :** 2000mm x 1700mm x 2150mm

## Solid Walls, Floor and Roof

Comprised of layered EchoPanel, muse panel, and steel acoustic deafener. The floor has 5mm steel panels on them with a layer of blue carpet covering the top. The roof is made of EchoPanel attached onto a 2mm steel plate which is connected to the top frame via magnets.

## Seat

The material of the top layer is soft foam and the bottom layer is hard foam. Both layers are covered in fabric.





# INTERIOR

## **Table**

The table is made of 100% recyclable material using rice husk and is formaldehyde-free.

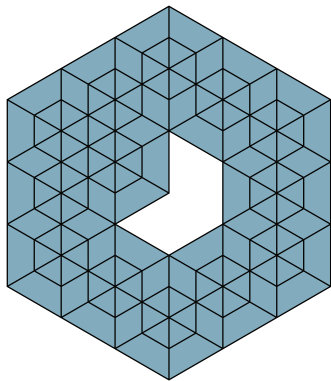
## **Ventilation**

Six fans are set in the roof of the Cabin, creating a fresh and comfortable working environment. Two slits are cut into the floor panels, allowing air to ventilate into the cabin.

## **Light**

Two LED strips attached to the back of the strip light.





**JEB**  
Partitions

[www.jebpartitions.com](http://www.jebpartitions.com)

**MYS** | Michael Young

Copyright © Michael Young Limited 2020