

JEB
Acoustic Partitions



REDEFINE THE WAY YOU WORK

MYS | Michael Young

Copyright © Michael Young Limited 2020

CABIN



"Cabin is a multi purpose meeting room; a private work space but equally one that could be used for sensory well being and adjustment"

Michael Young

CABIN

The Cabin is the perfect space for people to reconnect, focus and get away from the hectic open office workspaces.

Comfort

By using conference room systems, it creates a soundproof environment that helps to reduce noise and pollution, while creating a safe space that feels wide and comfortable.

Concentration

The Cabin is a multifunctional space ideal for small meetings, brainstorming sessions and gatherings that require privacy and focus.

Wellness

The Cabin is a space where people can have a moment of solitude to relax, focus and enjoy some "me time".

It also comes with switchable glass option for a more private experience.



CABIN

SINGLE CABIN







Mystic Black

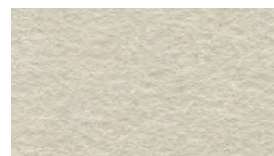
Interior



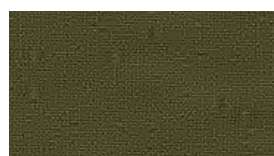
Metal Parts
Powdercoat Matt
Champagne



Wall Panels
EchoPanel Latitude 468



Ceiling
EchoPanel 908



Upholstery
Focus 384



Floor
Sisal



Table
White Ecoboard



Metal Parts
Black Powdercoat



Wall Panels
Muse Mineral 545

Exterior

Whisper White

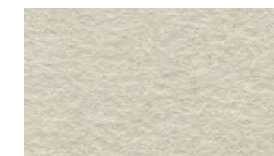
Interior



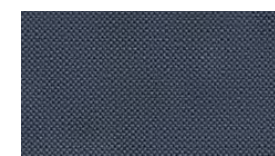
Metal Parts
Powdercoat Matt
Champagne



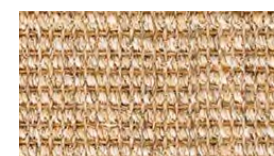
Wall Panels
EchoPanel Latitude 402



Ceiling
EchoPanel 908



Upholstery
Focus 300



Floor
Sisal



Table
White Ecoboard



Metal Parts
White Powdercoat



Wall Panels
Muse Mineral 503

Exterior

EXTERIOR

The Cabin is the perfect solution for both meeting sessions and introspective moments.

Cabin

Measurements : 2160mm x 1800mm x 2330mm

Material : Single glazed laminated glass
2090mm x 892mm

External custom Michael Young Woven Image Echo Panels

Left or right handed magnetic seal door with tempered laminated glass

Window, 12mm laminated clear glass

Colour Options : Mystic Black or Whisper White

Single Cabin

Measurements : 1195mm x 1150mm x 2330mm

Material : Single glazed laminated glass
2090mm x 693mm

External custom Michael Young Woven Image Echo Panels

Left or right handed magnetic seal door with tempered laminated glass

Window, 12mm laminated clear glass

Colour Options : Mystic Black or Whisper White



INTERIOR

The interior space of Cabin feels wide and pleasant, and this certainly makes it a comfortable space to be in.

Cabin Inside Measurements :

1975mm x 1635mm x 2150mm

Single Cabin Inside Measurements :

1035mm x 1065mm x 2150mm

Cabin Materials

Walls

Comprised of an interior muse panel, a middle steel acoustic panel and an external echo panel.

Floor

Covered in a locally sourced, environmentally friendly Sisal fabric carpet.

Ceiling

Has a covering of echo panel, creating a seamless join between wall and ceiling.

Furniture

The interior cushion of the sofa, in Cabin, is comprised of two main materials: natural latex and coco fiber (both biodegradable and locally sourced natural materials).

The fabric used is part of the Woven Image focus series.



INTERIOR

Table

The table is made of 100% recyclable material using rice husk and is formaldehyde-free.

Lighting

The standard lighting is a custom made aluminium strip light housing yellow colour LED light strips.

As an additional/optional feature, the Joseph pendant lights and the PIR motion sensor can be installed in the Cabin, giving it a functional yet comfortable and luxurious feel to it.

The soft Asian silhouette of the Joseph collection belies the reassuring strength of an object crafted from a solid block of aluminium. The optional PIR motion sensor will turn the light off after 2 minutes of inactivity.





Air Purifiers

Being in a close space has never felt safer. The Cabin comes with an “Airgle” air purifier. It is equipped with UV, PCO and Activated Carbon filtration technologies that remove airborne pollutants, such as dust particles, odors, second-hand smoke, bacteria, viruses, allergens and VOCs.



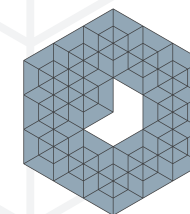
Ventilation

Six fans are set in the roof of the Cabin, creating a fresh and comfortable working environment. In addition to this, two vents are cut into the floor panels, allowing air to ventilate into the cabin.

THINK, COMMUNICATE, CREATE

MYS | Michael Young

Copyright © Michael Young Limited 2020



JEB
Acoustic Partitions

www.jebgroup.com.com