



**JEB**  
Partitions



Project Reference Presentation

2020



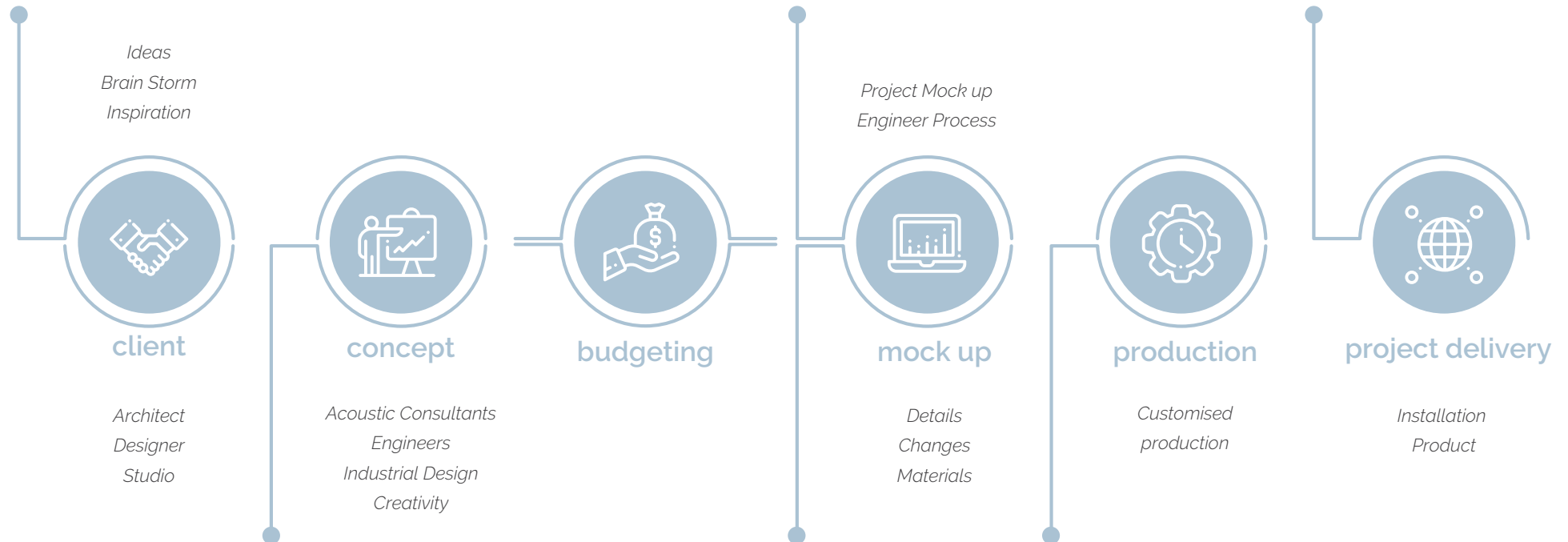
**JEB**  
Partitions

Establish a positive workplace **CULTURE**,  
a strong **IDENTITY** and a captivating  
**ATMOSPHERE** with premier office products.

# WHERE WE ARE

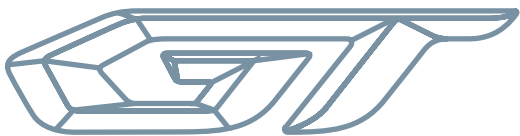


# OUR SERVICES



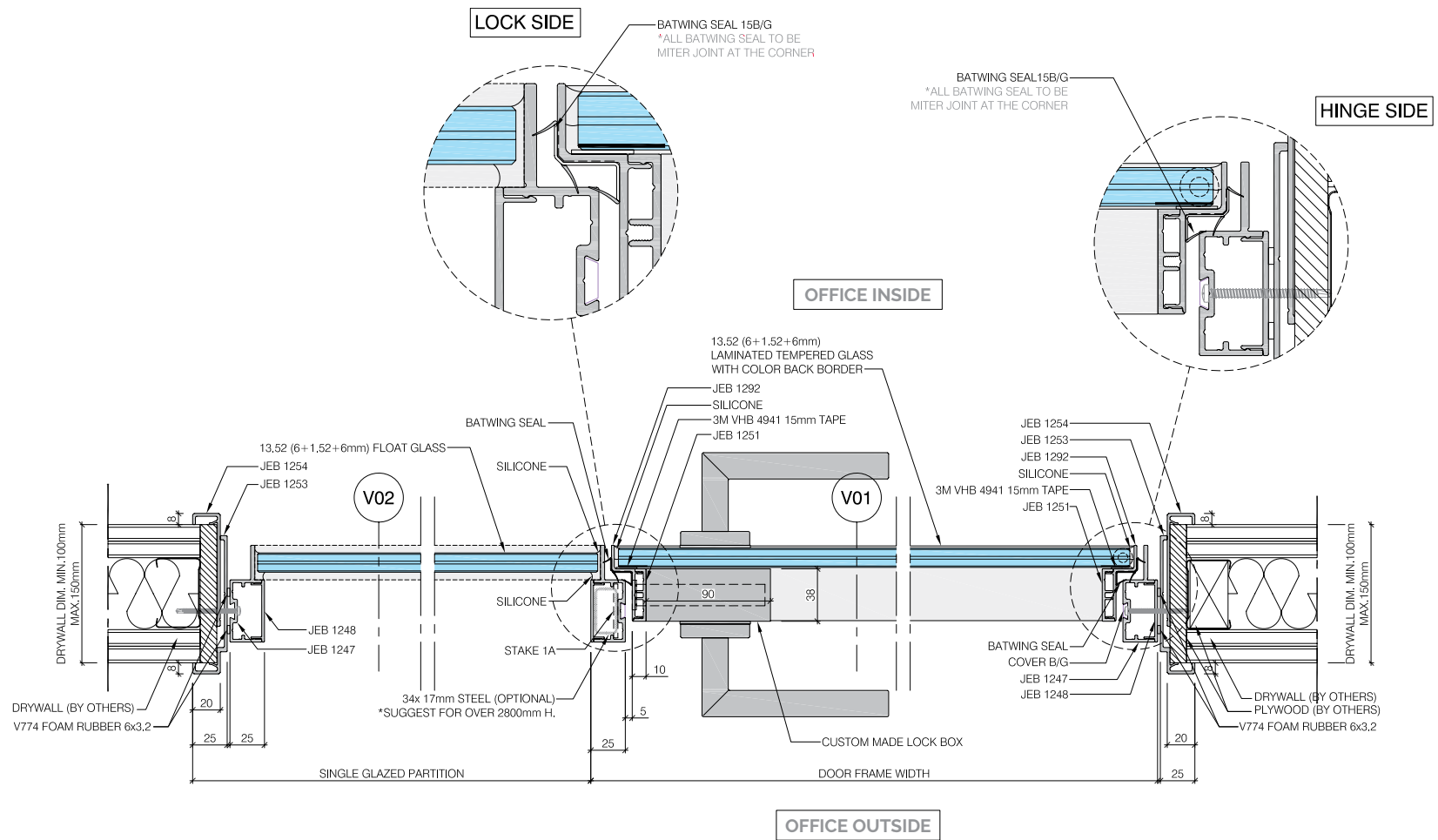


## **JEB** Partitions



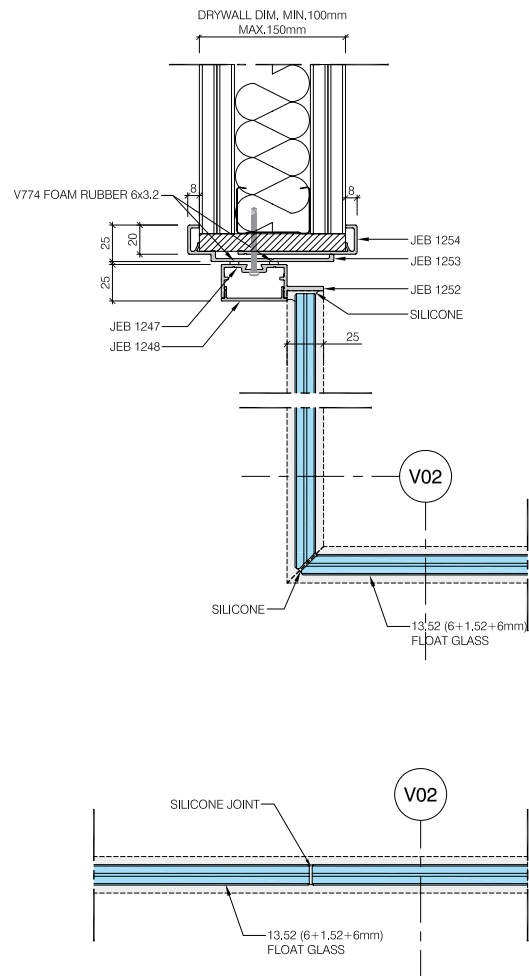
GT is a high-performance glass partition system with accompanying revolutionary door. This composition guarantees the tranquillity, privacy and sleekness that employees seek nowadays.

While door hinges are specifically designed to ensure maximum acoustic performances, the ultra-slim aluminium panels give a modern atmosphere to any offices through natural lighting and transparency.

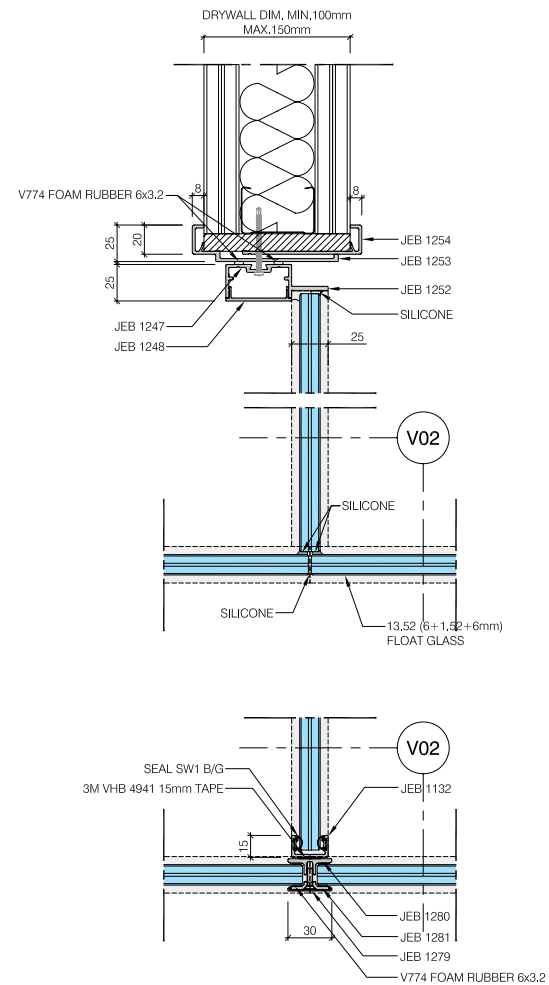


Our 25mm single glazed partition creates for the simple office interior, complete with a carefully-crafted and aesthetic structure door frame.

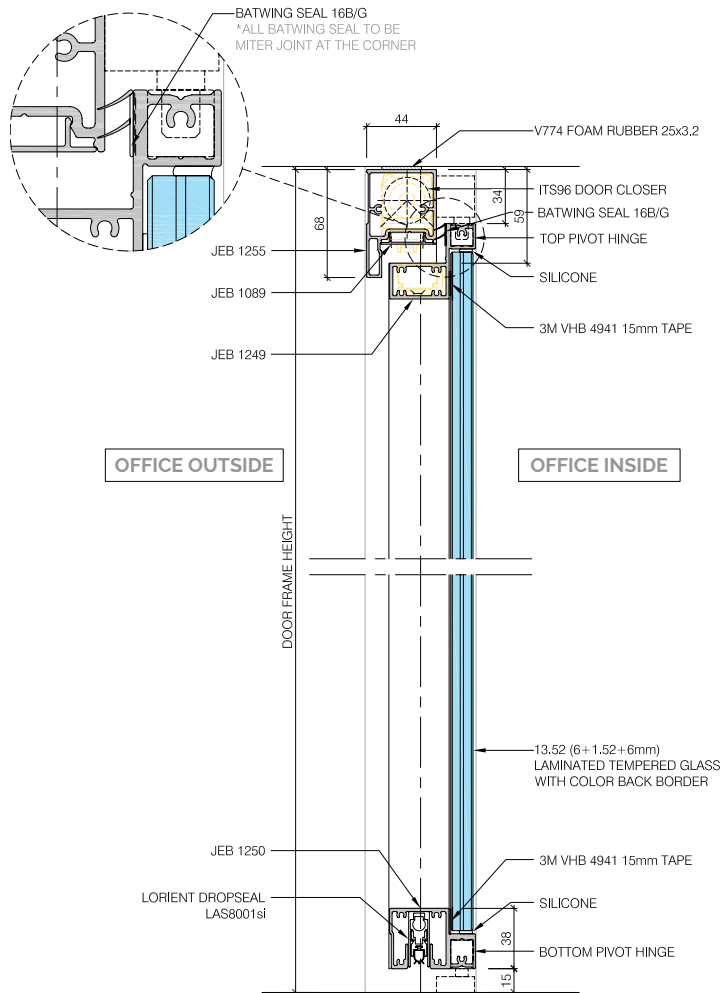
## HORIZONTAL SECTION SINGLE GLAZED PARTITION W/ SINGLE GLAZED DOOR



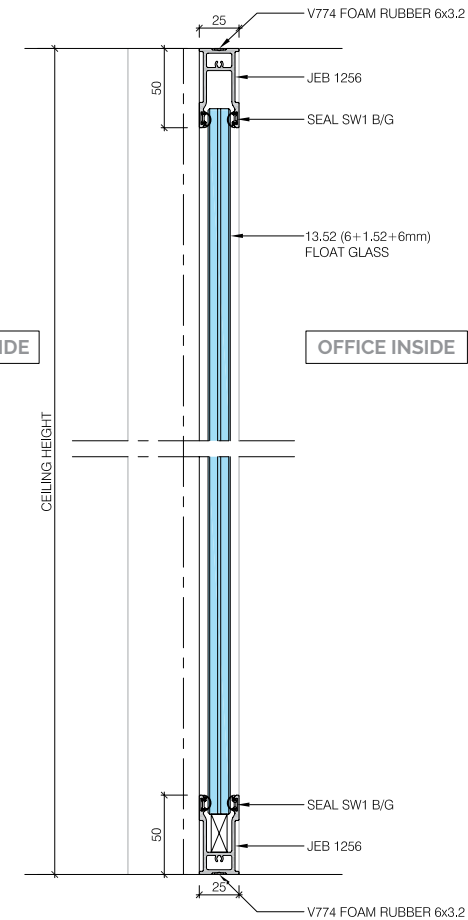
HORIZONTAL SECTION  
SINGLE GLAZED PARTITION CORNER JOINT



HORIZONTAL SECTION  
SINGLE GLAZED PARTITION L-JOINT

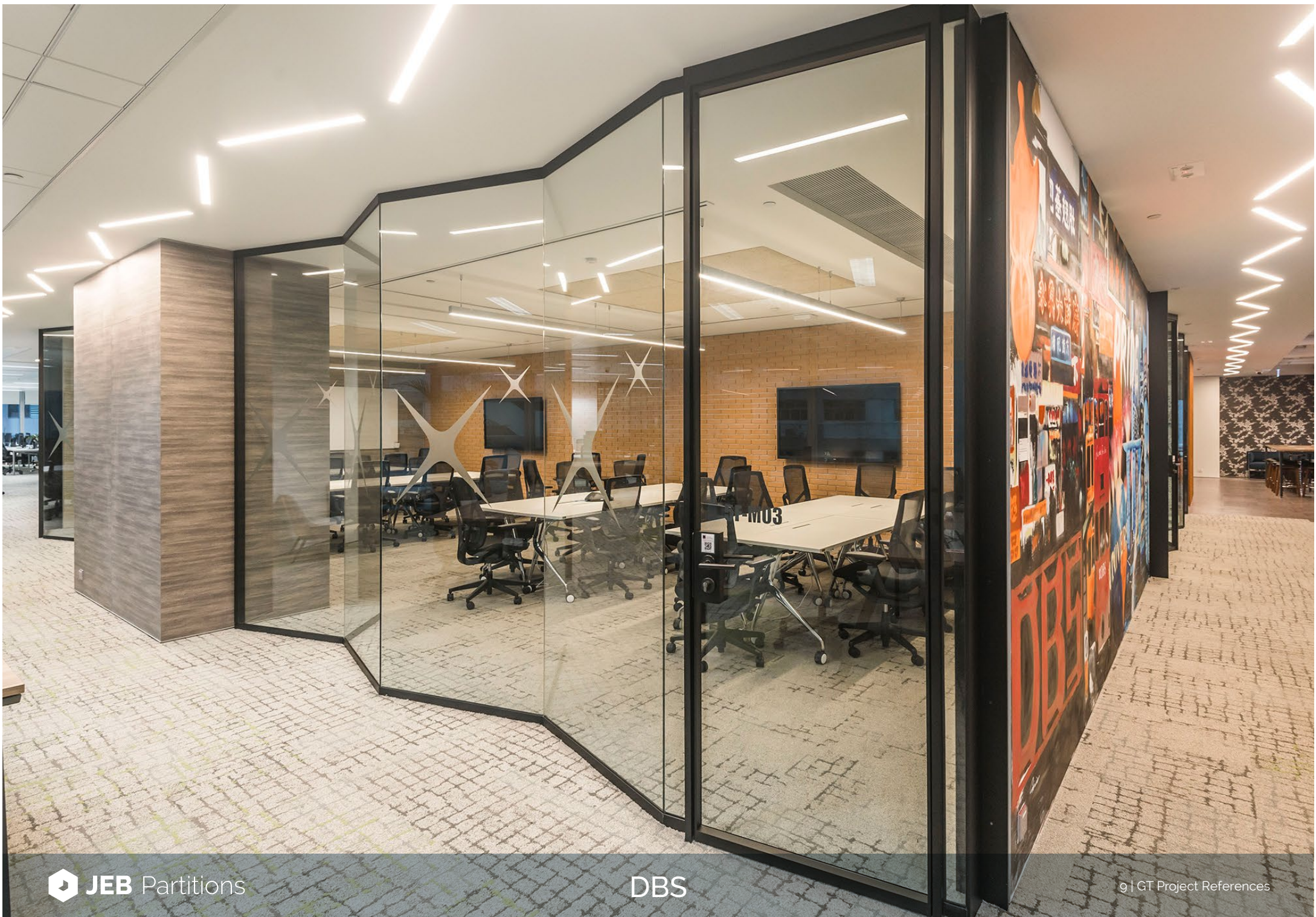


VERTICAL SECTION  
SINGLE GLAZED DOOR



VERTICAL SECTION  
SINGLE GLAZED PARTITION

















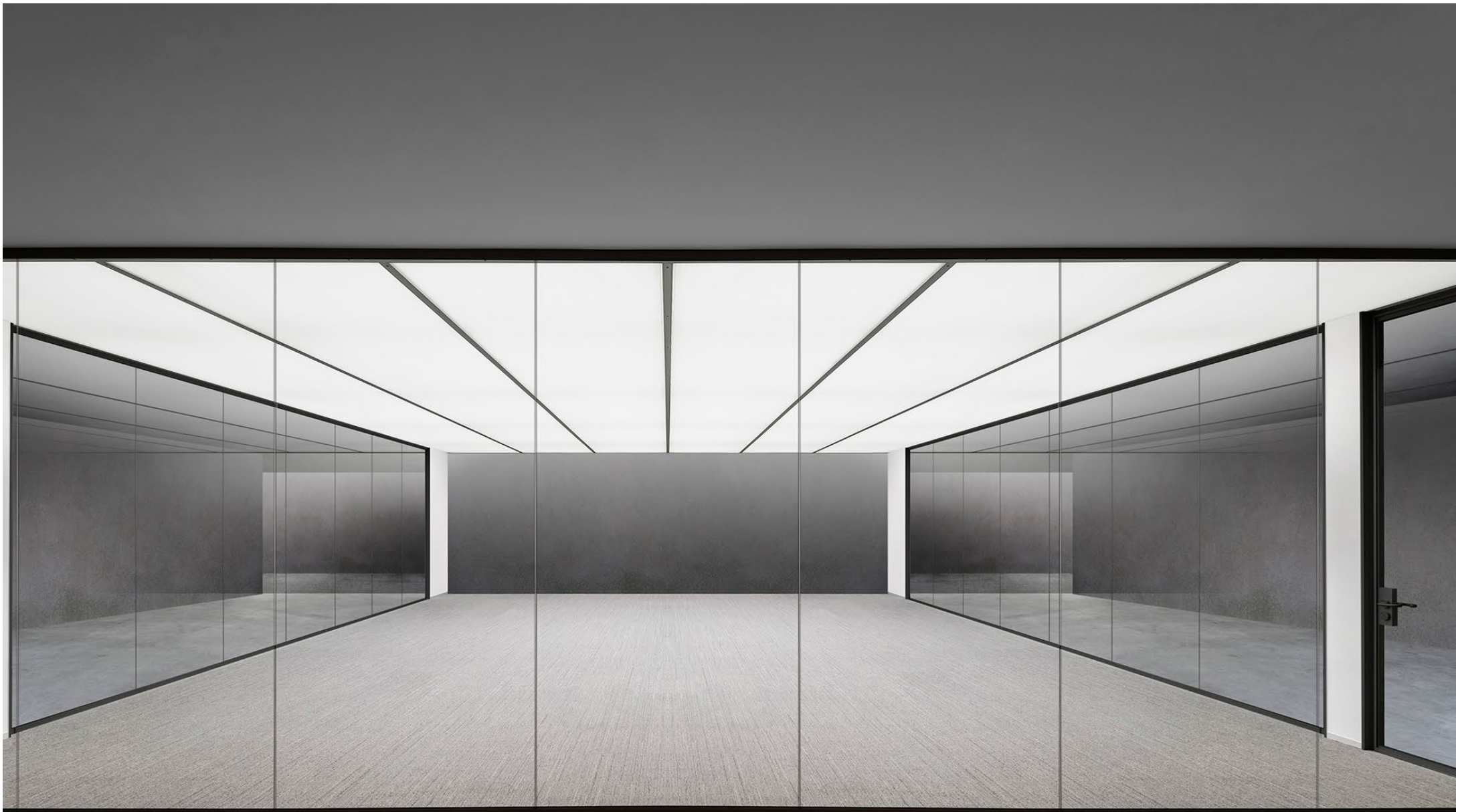


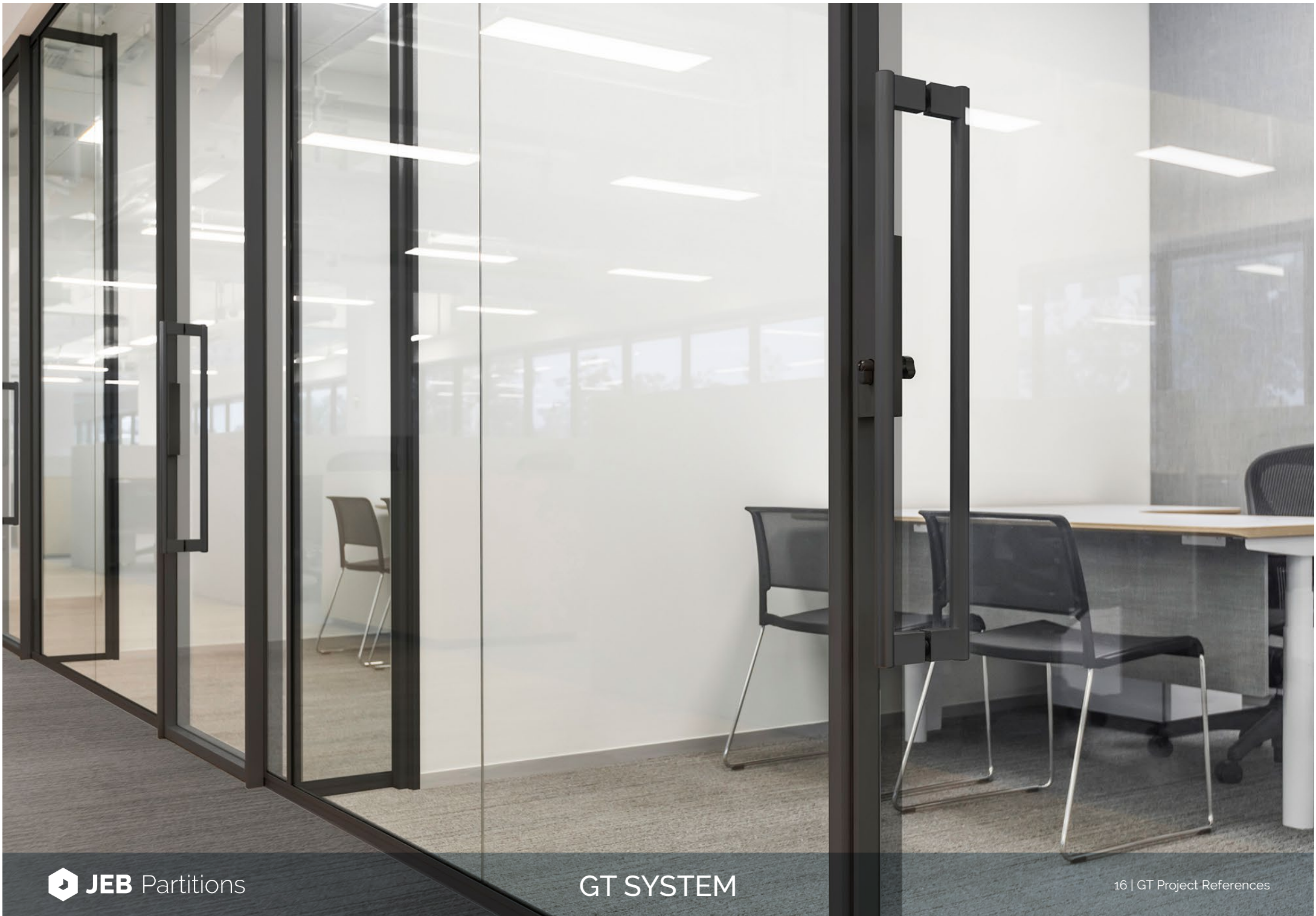
















---

5A Cheung Wah Industrial Building,  
10-12 Shipyard Lane,  
Quarry Bay, Hong Kong  
[Jebpartitions.com](http://Jebpartitions.com)

Date Updated : 19 SEP 2019